



# TETRA/LTE RADIO NETWORK COVERAGE AND PERFORMANCE SURVEY SYSTEM

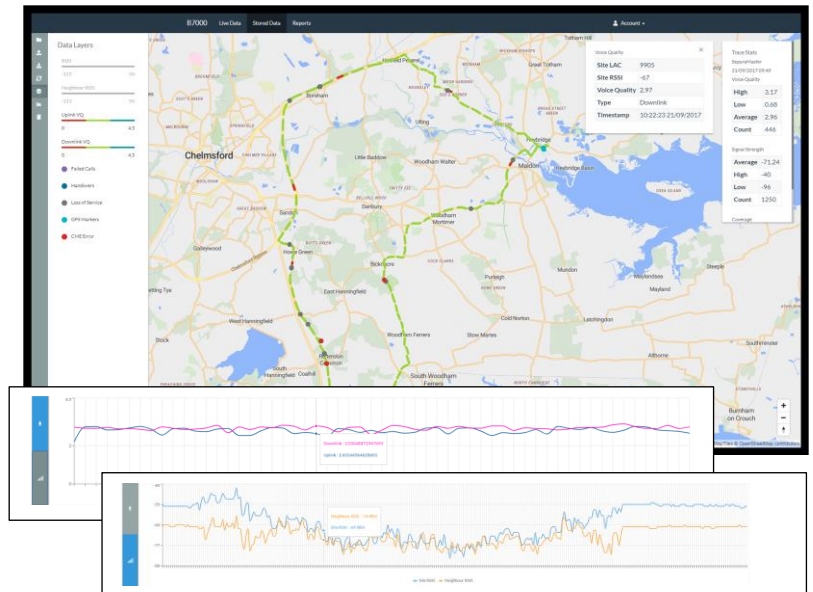
**Product Code: B7000**  
**TETRA/LTE**

## Product Description

B7000 is a versatile and scalable survey tool that supports TETRA and 4G network testing operations of all sizes, from single site surveys up to national scale networks.

Using custom developed probes B7000 can support most survey methods including walk testing, drive testing, fixed network monitoring and temporary monitoring installations in all types of operational environments land, sea and air.

B7000 uses GPS to plot data on maps; cell information, handover, C1/C2 values, voice quality scores and more that are quick and easy to use. Sharing and extracting data is simple and reports are automatically generated by the B7000 server.



© OpenMapTiles © OpenStreetMap contributors

## Applications:

B7000 probes (detailed overleaf) are deployed in the field and can be operated by field staff or alternatively they can operate entirely autonomously, collecting and transmitting data for remote inspection without the need for any human involvement. Test results gathered by the B7000 probes can be viewed live in the field on any laptop or mobile device, the collected data can be securely transmitted via 3G/4G, WiFi or Ethernet to a central server for storage and online analysis. B7000 can be configured to display probe location and network data in realtime to provide a live overview of all survey activity taking place on a network.

B7000 supports voice quality testing which is an extremely powerful tool that exposes call quality users will receive in any given location by performing real calls and analysing them using ITU approved industry gold standards PESQ and POLQA algorithms. Signal strength coverage maps and network information data are important indicators of performance. Only voice quality measurements can tell you exactly how good the audio messages are. B7000 has been built from the ground up with voice quality measurements and operational resilience at its core.

## Features and Benefits:

- Versatile operation modes to support all types of network surveying and monitoring, land, sea and air.
- Scalable design makes B7000 suitable for single site surveys up to national network scale monitoring.
- Supports voice quality testing using ITU approved industry gold standards PESQ and POLQA algorithms.
- Compatible with major TETRA radio equipment.
- B7000 probes can operate autonomously.
- Survey data is centrally stored and accessed through an easy to use website.
- Survey data is transmitted wirelessly to simplify data collection and support realtime monitoring of survey activity.
- There are 2 layers of security with the probe comms. Each probe sets up a secure encrypted tunnel over its 4G interface that all data must travel down. Then over that secure tunnel all data we generate is sent using HTTPS encryption.
- Managed access control ensures users only have access to the data they are permitted to view.

## B7000 TECHNICAL INFORMATION

<b>Compatible TETRA terminals:</b>	Compatible with ETSI standard TETRA terminals such as Sepura SC, STP, SRG.
<b>Demonstration:</b>	We will be pleased to provide a demonstration on request.

### B7000 TETRA probes:

**Latest specification  
B7000 Probe  
(Small and  
Lightweight)**



Dimensions: 25cmW x 28cmD x 7cmH  
Weight: 2.2Kgs  
Powered by internal Li-Ion battery or external  
12V DC power internal battery run time  
around 7 hours

**Probes are operated  
in pairs as  
Master/Slave for  
Voice Quality Surveys  
or individually for  
coverage RSSI testing**



- The probes can be table mounted, rucksack and rack mounted.

**B7000-LTE  
Probe App**



Suitable for Field Strength measurements of  
LTE/2G/3G/4G Networks.  
Android phone application.  
Supported on Android Version 6 and above.  
Can operate as background process, freeing up  
phone for other use.